

FINAL REPORT

Report by

Ghadaq Organization for Development

Submitted to:

Food and Agriculture organization of the UN (FAO)

| | |
|--|--|
| Letter of Agreement number (reference) | OSRO/YEM/802/CHA |
| Date of entry into force of LoA | 24 July 2018 |
| End date of LoA | 30 April 2019 with extension period for fishery component until 20 May 2020 |
| Reporting period | April 2018- September 2019 for Agricultural items and April 2019- May 2020 for fishery items |
| Submitted by (name of responsible officer) | Dr. Abdul Gabbar Al-Kirshi |



Ghadaq fishery distribution team ready to conduct the work (May, 2020)

Awareness of framers before distribution the agricultural items (February ,2019)

CONTENTS

| | PAGE |
|---|------|
| 1. EXECUTIVE SUMMARY | 3 |
| 2. INTRODUCTION TO FIRST COMPONENT "THE AGRICULTURE COMPONENT" | 5 |
| 3. PURPOSE AND DELIVERABLE OUTPUTS | 7 |
| 4. CONDUCT THE SERVICES | 9 |
| 4.1. MOBILIZATION OF COMMUNITIES | 9 |
| 4.2. REGISTRATION PROCESS | 9 |
| 4.3. STORAGE OF FAO INPUTS | 10 |
| 4.4. FORMING THE COMMUNITY DEVELOPMENT COMMITTEES | 11 |
| 4.5. TRAINING AND AWARENESS CREATION OF COMMUNITY COMMITTEES | 11 |
| 5. ACHIEVEMENTS OF THE FIRST COMPONENT | 12 |
| 5.1. RESULTS OF REGISTRATION OF BFs | 12 |
| 5.2. TRAINING OF TRAINERS (TOT) | 13 |
| 5.3. FORMING OF COMMUNITY COMMUNITIES | 13 |
| 5.4. TRAINING THE HEAD OF COMMUNITY COMMITTEES | 14 |
| 5.5. DISTRIBUTION OF AGRICULTURAL INPUTS | 15 |
| 5.5.1. DISTRIBUTION OF WHEAT SEEDS AND VEGETABLE SEEDS | 15 |
| 5.5.2. DISTRIBUTION OF VEGETABLE SEEDS | 18 |
| 5.5.3. DISTRIBUTION OF ANIMAL FEED | 19 |
| 5.6. DELAY IN DELIVERING OF INPUTS | 20 |
| 5.7. CHALLENGES ENCOUNTERED THROUGH THE IMPLEMENTATION OF THE ACTIVITIES | 20 |
| 5.8. PICTURES DOCUMENTATION | 20 |
| 5.9. LESSONS LEARNED, CONCLUSIONS AND RECOMMENDATIONS | 24 |
| 6. SECOND COMPONENT OF THE CONTRACT " THE FISHERY COMPONENT" | 25 |
| 6.1. OBJECTIVE AND OUTPUTS | 26 |
| 6.1.1. OBJECTIVE | 26 |
| 6.1.2. OUTPUTS | 26 |
| 6.1.3. BENEFICIARIES' IDENTIFICATION, MOBILIZATION & SENSITIZATION | 26 |
| 6.1.4. TARGETED BENEFICIARIES: | 27 |
| 6.1.5. CHALLENGES OF THE SECOND COMPONENT "FISHERY COMPONENT" | 28 |
| 6.1.6. DOCUMENTATION OF THE FISHERY COMPONENT | 29 |

1. EXECUTIVE SUMMARY

Two main components were conducted namely, the agriculture component and the fishery component.

Project Development Objective (PDO) of the agriculture component focused on improving food and nutrition security for the most vulnerable households in the districts of **Jabal Iyal Yazid** and **Khamir** of **Amran governorate**. The intervention of the fisher component was designed to reduce food insecurity of the most vulnerable fishers at risk groups by providing emergency livelihoods assistance aimed at supporting fishing community by supplying fishery inputs in Hodeidah governorate.

The distribution of the items of first component, the "agriculture component" started on 19. August 2018 in Amran, Jabal Iyal Yazeed and Khamer districts, whereas the second component the "fishery component" began the distribution on 9. May 2020 in **Alhudaiedah** namely, **Alluhayah, Bait Alfaqeeh** and **Bajel** due to extremely delay in receiving the items and issuing distribution license by SCHMCHA. .

CONDUCTING THE AGRICULTURAL COMPONENT

The following key activities have been conducted to fulfil the project objectives:

- Mobilize the target communities, undertake beneficiary selection, validation and registration (with gender considerations);
- Prepare stores at Jabal iyal Yazid and Khamir districts with good conditions to store the inputs received and then transport them to the identified distribution points in the targeted districts according to distribution plan.
- Establishment of community committees (each committee to contain up to 30 representatives);
- Raise the awareness of targeted communities on the feedback/complaint mechanism (details of the feedback/complaint procedures and mechanism);
- Distribute livestock inputs (feed concentrate, mineral blocks and feed blocks) **to 3,600 HHs**.
- Distribute kits of **vegetable seeds and farming gardening tools to 3,460 HHs** (Farming gardening hand tools still not received and therefore not distributed).
- Distribute improved cereal seeds (wheat) to **500 HHs**.
- Carryout two sets of **training sessions on the areas of livestock and crop production to the heads of established community committees** (based on the input each HH is receiving).
- Implement M&E activities with third party including field visits and inter-agency coordination.

CONDUCTING THE FISHERY COMPONENT

With this part, the project intended to target 6,000 HHs in Hodeidah governorate by supporting them with fishery inputs.

Furthermore, FAO interventions intended to help vulnerable fishermen in target areas to protect their livelihoods from future shocks, to improve their food security and nutrition.

1. Distribution of fishery inputs (2000 fishing nets, 2000 iceboxes) provided to pre-selected beneficiaries in the districts of Alluheyah, Bajil and Bayt Al Faqiah of Al-Hodeidah governorate to allow them to return to fishing.
1. several precautionary measures were taken before distributing the inputs , in light of COVID-19 pandemic , see the following precautionary:
 - a) Each group nominates one person to receive the inputs in order to alleviate the crowds of beneficiaries;
 - b) Measuring the temperature of the beneficiaries before entering the distribution points by thermostat using special measuring instruments;
 - c) Daily sterilization of inputs before distributed to the beneficiaries using spray sterilization solutions;
 - d) Preparing and organizing the place of distribution by marking and specifying a distance not less than one meter between each beneficiary and another.
 - e) Masks, sterilizers, and gloves were distributed to the distribution team.

Ghadaq in each district has conducted the activities under direct supervision of the General Authority of Fisheries- Red Sea Offices in Hudayidah governorate.

LIST OF TABLES

- Table 1: Numbers of **Head of Households** (Male and Female) registered in Khamer and Jabal Iyal Yazeed for receiving feed concentrate, wheat seed and vegetable seed
- Table 2: Numbers of Families members (Male and Female) making use of feed concentrate, wheat seed and vegetable seed registered in Khamer and Jabal Iyal Yazeed
- Table 3: Number of community committees formed and the related representatives for the delivered inputs Feed blocks menial blocks and feed concentrate, wheat seeds and Vegetable seeds in Jabal Iyal Yazeed and Khamer districts
- Table 4: Numbers of Beneficiaries (Male and Female) received wheat seeds and vegetable seeds in Khamer and Jabal Iyal Yazeed
- Table 5: Actually distributed items of seeds and animal feed
- Table 6: districts, distribution points, distribution items to BFs and groups
- Table 7: the distribution points in the districts

LIST OF FIGURES

- Figure 1: Ghadaq distribution team in Jabal Iyal Yazeed, Amran
- Figure 2: The project introductory workshop conducted in NAMCHA office in Amran
- Figure 3: Registration of female BFs Amran
- Figure 4: Registration of male BFs Amran
- Figure 5: Storage of agricultural inputs in Kamer and Jabal Iyal Yazeed districts
- Figure 6: Training the heads of community committees in Khamer And Jabal Iyal Yazeed
- Figure 7: Amran Governor, inaugurated the distribution of agricultural inputs
- Figure 8: Distribution of seeds in Kahmer and Jabal Iyal yazeed districts
- Figure 9: Storage, preparation and distribution of feed blocks
- Figure 10: Check and verify of BFs documents
- Figure 11: Education and awareness campaign on proper use of feed blocks
- Figure 12: Follow up the growing of wheat
- Figure 13: Awareness campaign for BFs before distribution of the feed concentrate and feed blocks
- Figure 14: Distribution of feed concentrate and feed blocks
- Figure 15: The minister of fishery along with other officials on 31.Juanury 2010 inaugurated the activities for fishery distribution
- Figure 16: Received the fishery inputs, sterilized and stored
- Figure 17: Verification of beneficiaries of fishery inputs
- Figure 18: Precautionary measures fisher inputs and distributions
- Figure 19: Fishery inputs and distributions
- Figure 20: Distribution team of fishery inputs

LIST OF MAPS

- Map 1: The sub districts and villages targeted by distribution of wheat seeds in Jabal Iyal Yazeed district
- Map 2: The sub districts and villages targeted by distribution of wheat seeds in Khamer district
- Map 3: Sub districts and villages targeted by distribution of vegetable seeds in Iyal Yazeed
- Map 4: Sub districts and villages targeted by distribution of vegetable seeds in Khamer

2. INTRODUCTION TO FIRST COMPONENT "THE AGRICULTURE COMPONENT"

GHADAQ Organisation for Development and FAO/YEMEN signed a Letter of Agreement (LoA) called "Provision of services for the distribution of Emergency Livelihood Inputs to the most vulnerable households in Amran Governorate". The services are under the framework of the project "**OSRO/YEM/802/CHA**" financed by UN- Office of Coordination of Humanitarian Affairs (**OCHA**) and implement by the FAO in cooperation with local NGOs. The project period according to the LoA stated 24 July 2018 and to be completed by 30 April 2019.

Project Development Objective (PDO) focused on improving food and nutrition security for the most vulnerable households in the districts of **Jabal Iyal Yazid** and **Khamir** of Amran governorate. This will be achieved through restoring and enhancing access to agriculture inputs, providing specific investments and technical assistance to improve agriculture yields and nutritional value and upgrade diversify agriculture and livestock production and marketing. Crop seeds and livestock feed are the main deliverables to the BFs.

Crop seeds

The following beneficiary selection criteria have been prioritized:

- Beneficiary owns less than 1.0 ha of agriculture land;
- Female- headed households ;
- Have a family member with disability;
- Beneficiary hosts IDPs from other regions;
- Beneficiary shows interest to adapt new technologies and be committed to transfer their skills and knowledge to other farmers.

Livestock inputs

The following beneficiary selection criteria have been prioritised:

- Be permanent residents with a fixed location in the targeted district;
- Hold enough space for live-animals;
- Be hosting IDPs or returnees to their permanent residents with proved enough space for livestock;
- Have excess labour (at least one free individual between 18 and 60 years of age to take care for animals);

- Have lost their livestock (due to ongoing conflict) or have experience in backyard animal keeping;
- Live in a community with access to animal feed.



Figure 1: Ghadaq distribution team in Jabal Iyal Yazeed, Amran

3. PURPOSE AND DELIVERABLE OUTPUTS

Objective. To improve food and nutrition security for the most vulnerable households in the districts of **Jabal iyal Yazid** and **Khamir** of Amran governorate

Outputs:

Output 1: Enhanced food production capacities of vulnerable through provision of emergency agricultural livelihood inputs and services.

Output 2: Diversified income and livelihoods of vulnerable households through provision of animal feed.

The following inputs have been delivered by GHADAQ:

- i. Forming community committees represent all targeted BFs
- ii. Training and capacity development sessions to the heads of community committees (two training sessions) on topics related to animal husbandry and crop production (to be identified by FAO national consultants).
- iii. Distribution of livelihoods inputs (cereal seeds, vegetable kits and animal feed concentrate, mineral blocks and feed blocks)) provided beneficiaries in the districts of Jabal iyal Yazid and Khamir of Amran governorate.

Outputs indicators:

- 3,600 households supported with livestock inputs (feed concentrate, mineral blocks and feed blocks).
- 3,460 households supported with kits of vegetable seeds and farming hand tools.
- 500 households supported with improved wheat seed.
- Number of training sessions conducted on the areas livestock and crop production to the heads of established community committees (based on the input each HH is receiving).
- 80% of households aware of the complaints and feedback mechanism.
- Number of community committees established.
- Baseline and end-line surveys conducted (a percentage yet to be identified by the M&E unit).

Activities.

The following key activities have been conducted to fulfil the project objectives:

- Mobilize the target communities, undertake beneficiary selection, validation and registration (with gender considerations);
- Prepare stores at Jabal iyal Yazid and Khamir districts with good conditions to store the inputs received and then transport them to the identified distribution points in the targeted districts according to distribution plan.
- Establishment of community committees (each committee to contain up to 30 representatives);
- Raise the awareness of targeted communities on the feedback/complaint mechanism (details of the feedback/complaint procedures and mechanism);
- Distribute livestock inputs (feed concentrate, mineral blocks and feed blocks) **to 3,600 HHs.**
- Distribute kits of **vegetable seeds and farming hand tools to 3,460 HHs** (Farming hand tools are still not received and not distributed).
- Distribute improved cereal seeds (wheat) to **500 HHs.**
- Carryout two sets of **training sessions on the areas of livestock and crop production to the heads of established community committees** (based on the input each HH is receiving).
- Implement M&E activities with third party including field visits and inter-agency coordination.

4. CONDUCT THE SERVICES

4.1. MOBILIZATION OF COMMUNITIES

In coordination with the Ministry of Agriculture and Irrigation offices in Amran GHADAQ has mobilized the communities on the purpose of the proposed activities at district/village level. These included the following:

- Conduct an introductory workshop in NAMCHA office to mobilize stakeholders and BFs on the foreseen activities and to get common understanding of the different roles of the actors. The workshop has been attended by different actors and with stakeholders (Directors of agricultural offices at governorate levels and districts levels, Director of the National Authority for Management and Coordination of Humanitarian Affairs (NAMCHA), Amran deputy governor for NGOs affairs, representatives of beneficiaries);



Figure2: The project introductory workshop conducted in NAMCHA office in Amran

4.2. REGISTRATION PROCESS

Starting preparation for registration by:

- Meeting with head of agricultural office
- Meeting with head of NAMCHA
- Meeting with Local Authority
- Workshop with stakeholders
- Appointing the enumerator for each district
- Registration of the targeted Beneficiaries according to the agreed criteria.



Figure 3: Registration of female BF's Amran



Figure 4: Registration of male BF's Amran

4.3. STORAGE OF FAO INPUTS

GHADAQ, upon notification of the FAO responsible officer and the input supplier has prepared a storage/place facility, to keep the inputs and then transported them to the identified distribution points in the targeted villages.



Figure 5: Storage of agricultural inputs in Kamer and Jabal Iyal Yazed districts

4.4. FORMING THE COMMUNITY DEVELOPMENT COMMITTEES

The following criteria have been followed in the selection of community development committees.

- The community members should represent a cluster of villages with distance between them not exceeding 8 km in a single district.
- All villages involved in one committee should have no experience of conflict or dispute against one of the involved villages.
- Each committee's member should have experience with volunteer activities in his/her area, and shows willingness and ability to be involved in such activities.
- Communities' members/areas should be located in places that can be accessed by agriculture office supervision members.
- Number of committees to be established and confirmed based on the type of beneficiary groups with FAO M&E unit.
- Committees should be authorized by the government and district councils.

4.5. TRAINING AND AWARENESS CREATION OF COMMUNITY COMMITTEES

This includes:

- Establishment of community committees with representation including women and community leaders to present the implementation plan of the project.
- Establishment of clear and formal complaint mechanisms to be discussed and agreed upon with selected beneficiaries and provided by FAOYE M&E unit.
- Collection of the feedback/complaints on weekly basis.
- Provision of clear feed-back to beneficiaries rising complains and discussions with the project team on how to improve the relevant components of the project implementation.

5. ACHIEVEMENTS OF THE FIRST COMPONENT

5.1. RESULTS OF REGISTRATION OF BFs

Registration of targeted beneficiaries in Jabal Iyal Yazeed and Khamer district as follows:

- 500 households supported with improved wheat seed
- 3,460 households supported with kits of vegetable seeds and farming hand tools
- 3,600 households supported with livestock inputs (feed concentrate, mineral blocks and feed blocks)

Table 1 reflects the Numbers of **Head of Households** (Male and Female) registered in Khamer and Jabal Iyal Yazeed for receiving feed concentrate, wheat seed and vegetable seed whereas table 2 shows the numbers of **families members** (Male and Female) registered and making use of feed concentrate, wheat seed and vegetable seed.

Having a look to table 1 we can see that the percent female to male ratio registered as **Head of Households** in Jabal Iyal Yazeed and Khamer districts are 7.1% and 12.3%, respectively with an average of 9.7% of the total percent female/male ratio.

In table 2 the same percent female/male ratio reflecting the real families members of the same Households. It is easy to see that the ratio female/male of the families members who make real use of the delivering agricultural inputs are in both districts more than 51%.

Conclusion: Although, the female representatives registered as Head of Households were around 10 % (table 1) due to cultural reasons in Amran Governorate, but the end users as female making use of the agricultural items are more than 51% (table 2)

Table 1: Numbers of **Head of Households** (Male and Female) registered in Khamer and Jabal Iyal Yazeed for receiving feed concentrate, wheat seed and vegetable seed

| District | Feed concentrate | | | Wheat seed | | | Vegetable seed | | | Total Hhs | Total | | % female/male |
|-------------------|------------------|------|-------|------------|------|-------|----------------|------|-------|-----------|-------|-----|---------------|
| | Male | Fem. | Total | Male | Fem. | Total | Male | Fem. | Total | | Male | Fem | |
| Jabal Iyal Yazeed | 1678 | 122 | 1800 | 244 | 6 | 250 | 1607 | 123 | 1730 | 3780 | 3529 | 251 | 7.1 |
| Khamer | 1495 | 305 | 1800 | 242 | 8 | 250 | 1628 | 102 | 1730 | 3780 | 3365 | 415 | 12.3 |
| Total | 3173 | 427 | 3600 | 486 | 14 | 500 | 3235 | 225 | 3460 | 7560 | 6894 | 666 | 9.7 |

Table 2: Numbers of Families members (Male and Female) making use of feed concentrate, wheat seed and vegetable seed registered in Khamer and Jabal Iyal Yazeed

| District | Feed concentrate | | | Wheat seed | | | Vegetable seed | | | Total targeted persons | Total targeted males | Total females | % females |
|-------------------|------------------|-------|-------|------------|------|-------|----------------|-------|-------|------------------------|----------------------|---------------|-----------|
| | Male | Fem. | Total | Male | Fem. | Total | Male | Fem. | Total | | | | |
| Jabal Iyal Yazeed | 6160 | 6102 | 12262 | 1055 | 1194 | 2249 | 7769 | 8455 | 16224 | 30735 | 14984 | 15751 | 51.25 |
| Khamer | 6684 | 7199 | 13883 | 948 | 1001 | 1950 | 7011 | 7588 | 14599 | 30432 | 14643 | 15788 | 51.88 |
| Total | 12844 | 13301 | 26145 | 2003 | 2195 | 4199 | 14780 | 16043 | 30823 | 61167 | 29627 | 31539 | 51.56 |

5.2. TRAINING OF TRAINERS (TOT)

Four persons have been trained directly by the FAO as TOT (6 days Training of Trainers) in regional location of the country namely, in Almahweet Governorate. Two trainers were specialized in crop production and the other two were specialized in livestock production. Moreover, these trainers have also received one day training and instructions in how to conduct the training with the BFs. These trainers have then trained the **Head of community committees in both districts**. Moreover, the trainers have played key roles by awareness building and instructions of BFs during the distribution of the agricultural inputs

5.3. FORMING OF COMMUNITY COMMUNITIES

By forming **the community communities**, we have followed the following procedures:

1. All BFs have been grouped (every group consist of 30 BFS) according to their near distance to each other;
2. Every 30 BFs were represented by 1 representative as head of the **community communities**;
3. Accordingly, in each district we formed 125 **heads of community communities**

Table 3 reflects the community committees formed and the related representatives for the delivered inputs Feed blocks menial blocks and feed concentrate, wheat seeds and Vegetable seeds.

Table 3: Number of community committees formed and the related representatives for the delivered inputs Feed blocks menial blocks and feed concentrate, wheat seeds and Vegetable seeds in Jabal Iyal Yazeed and Khamer districts

| Sector | Jabal Iyal Yazeed | | | Khamer | | |
|--|-------------------|----------------------|---|--------|----------------------|---|
| | # BFS | # communities formed | Representatives of community committees | # BFS | # communities formed | Representatives of community committees |
| Feed blocks menial blocks and feed concentrate | 1800 | 60 | 60 | 1800 | 60 | 60 |
| Wheat seeds | 250 | 8 | 8 | 250 | 8 | 8 |
| Vegetable seeds | 1730 | 57 | 57 | 1730 | 57 | 57 |
| Total | 3780 | 125 | 125 | 3780 | 125 | 125 |

5.4. TRAINING THE HEAD OF COMMUNITY COMMITTEES

The **Head of community committees** have been trained in two training sessions (one session covered the crop production and the other livestock health and production). The head of the communities were then main source for awareness and dissemination of information to the rest of community members.

The number of heads of community committees trained in each districts was 126 persons with a total number of 252 persons in both districts. .





Figure 6: Training the heads of community committees in Khamer And Jabal Iyal Yazeed

5.5. DISTRIBUTION OF AGRICULTURAL INPUTS

5.5.1. DISTRIBUTION OF WHEAT SEEDS AND VEGATABLE SEEDS

The distribution of the items have been followed after training the the heads of community committees and had been inaugurated by the governor of Amran starting by distribution of the wheat seeds in Jabal Iyal Yazeed and Kahmer.

In cooperation with the agricultural offices at district and government levels and with the local Authorities, the distribution of wheat and vegetable seeds has been done in the following sequences:

Completion the registration through:

- Meeting with head of agricultural office
- Meeting with head of NAMCHA
- Meeting with Local Authority
- Completion of distribution procedures
- Rent of central store n Jabal Iyal Yazeed and receiving the items from the supplier in this store for both districts;
- Rent stores in the distribution points in Jabal Iyal Yazeed and Khamer district;
- Transport the items to the stores in the distribution points;
- Awareness building and instructions to BFs before handing over of agricultural items;
- Distribution of items.



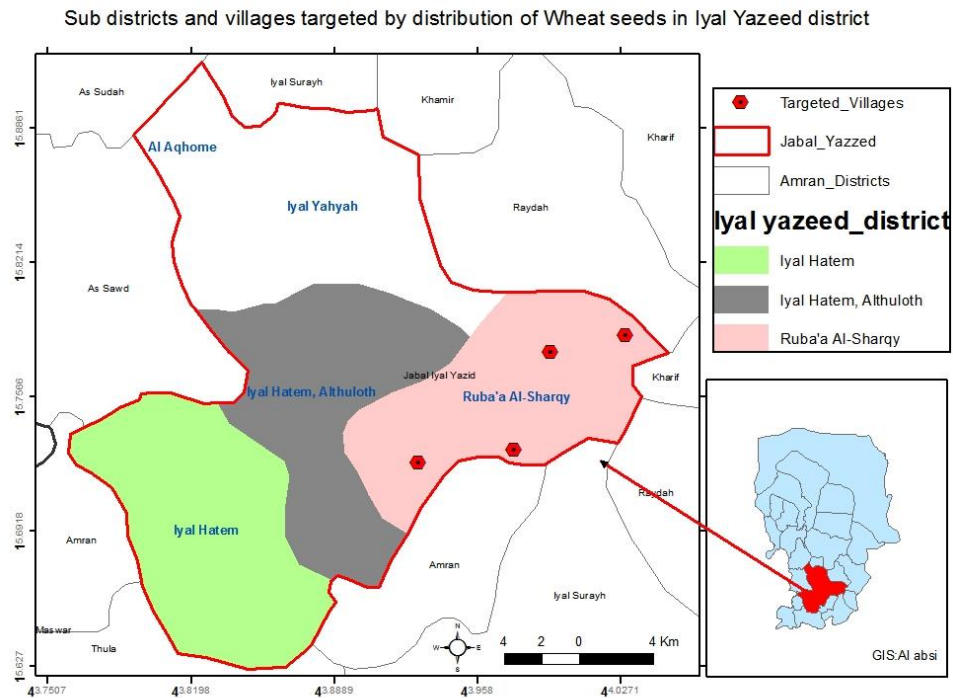
Figure 7: Amran Governor, inaugurated the distribution of agricultural inputs

Table 4 reflects the Numbers of beneficiaries received wheat seeds and vegetable seeds in Khamer and Jabal Iyal Yazeed. From the table we can see that the total numbers of BHs already received inputs is **3960** BHs out of **7560**. This figure makes **52.4%** of the total targeted figure in both districts.

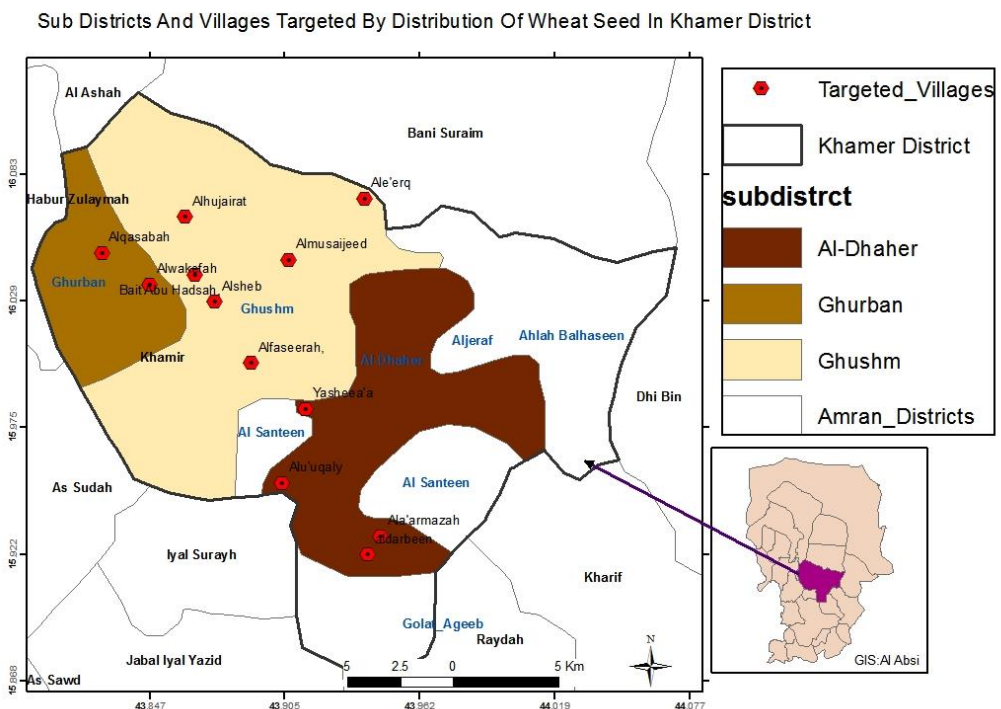
Table 4: Numbers of Beneficiaries (Male and Female) received wheat seeds and vegetable seeds in Khamer and Jabal Iyal Yazeed

| District | Wheat seed | | | Vegetable seed | | | Total HHs | Total | |
|-------------------|------------|-----------|------------|----------------|------------|-------------|-------------|-------------|------------|
| | Male | Fem. | Total | Male | Fem. | Total | | Male | Fem |
| Jabal Iyal Yazeed | 244 | 6 | 250 | 1607 | 123 | 1730 | 1980 | 1851 | 129 |
| Khamer | 242 | 8 | 250 | 1628 | 102 | 1730 | 1980 | 1870 | 110 |
| Total | 486 | 14 | 500 | 3235 | 225 | 3460 | 3960 | 3721 | 239 |

Map 1 and map 2 reflect the sub districts and villages targeted by distribution of wheat seeds in Jabal Iyal Yazeed and Khamer districts.



Map 1: The sub districts and villages targeted by distribution of wheat seeds in Jabal Iyal Yazeed district

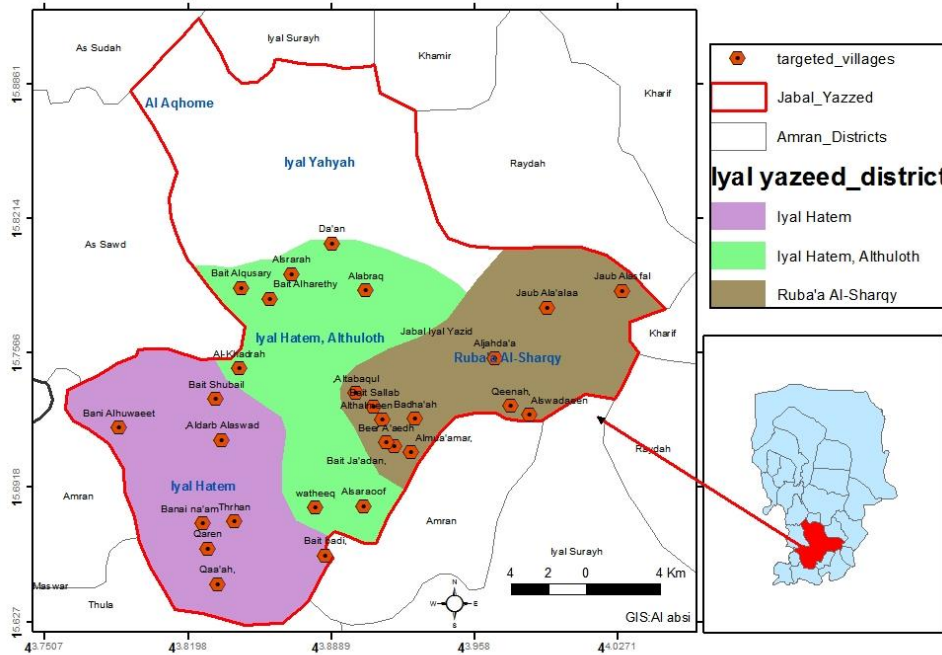


Map 2: The sub districts and villages targeted by distribution of wheat seeds in Khamer district

5.5.2. DISTRIBUTION OF VEGETABLE SEEDS

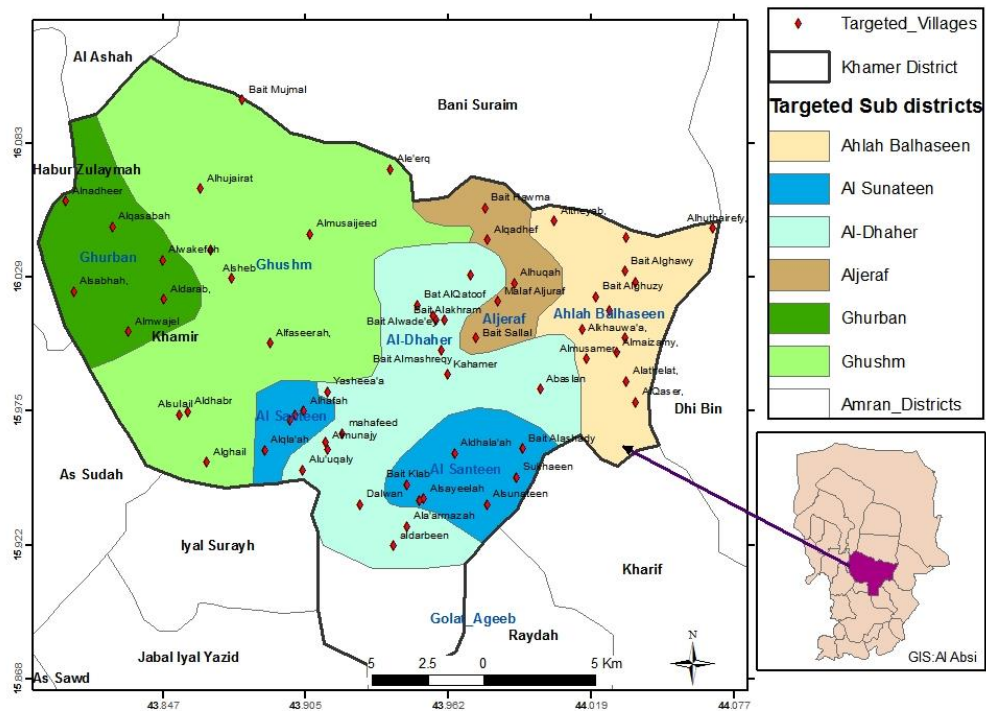
Map 3 and map 4 reflect the sub districts and villages targeted by distribution of vegetable seeds in Jabal Iyal Yazed and Khamer districts.

Sub districts and villages targeted by distribution of vegetable seeds in Jabal Iyal Yazed district



Map 3: Sub districts and villages targeted by distribution of vegetable seeds in Iyal Yazed

Sub districts and villages targeted by distribution of vegetable seeds in Khamer district



Map 4: Sub districts and villages targeted by distribution of vegetable seeds in Khamer



Figure 8: Distribution of seeds in Kahmer and Jabal Iyal yazeed districts

5.5.3. DISTRIBUTION OF ANIMAL FEED

Table 5 reflects the supposed distributed items of seed and gardening materials and the animal feed. The gardening materials have not been yet received and therefore not distributed.

Table 5: Actually distributed items of seeds and animal feed

| Seeds and gardening material | | | | | | | | | | |
|------------------------------|----------|-------------------|------------------|-----------------------------|--------------------|------------------|---------------------------|-----------------------|-----------------|---------------------|
| No | District | Sub district | Seed | | | Vegetable inputs | | | | gardening materials |
| | | | Wheat 40 kj/ HHs | | | HHs | Onion Bafutaim 0.5 kg/ HH | hot pepper 0.1 kg/ HH | Okra 0.5 kg/ HH | |
| | | | variety | HHs | Qt Kj | | | | | |
| 1 | Amran | Jabal Iyal Yazeed | Ughnaimy | 250 | 10,000 | 1730 | 865 | 173 | 865 | still not recived |
| 2 | Amran | Khamer | Ughnaimy | 250 | 10,000 | 1730 | 865 | 173 | 865 | |
| Total | | Y | | 500 | 20,000 | 3,460 | 1,730 | 346 | 1,730 | |
| Animal feed | | | | | | | | | | |
| No | District | Sub district | Animal feed | | | | | | | |
| | | | HHs | Feed concentrate 100 kg IHH | Menial blocks 1/HH | Feed blocks 4/HH | | | | |
| 1 | | | 1,800 | 180 | 1,800 | 7,200 | | | | |
| 2 | Amran | Jabal Iyal Yazeed | 1,800 | 180 | 1,800 | 7,200 | | | | |
| Total | | Amran | 3,600 | 360 | 3,600 | 14,400 | | | | |

5.6. DELAY IN DELIVERING OF INPUTS

As the contract signed between GHADAQ and the FAO was foreseen to be completed with all activities by the 30. Of April 2019 and some inputs still not received (feed blocks, feed concentrate and gardening materials), GHADAQ has been asked kindly to continue holding the stores in May, June and July 2019 and the FAO will pay justified compensation. The feed blocks and feed concentrate have been received after ending the contract and have been distributed also after that. The gardening materials have been not yet received up to date of this report.

5.7. CHALLENGES ENCOUNTERED THROUGH THE IMPLEMENTATION OF THE ACTIVITIES

- Problems with cooperation with MAI head office in Amran; That was at the beginning in September and solved by bilateral meeting with general director of agricultural office in Amrani
- Transportation problems due to the tragedy increasing in fuel prices;
- Social problems (problems by Female registration);
- Delay of delivering the animal feed concentrate, animal feed blocks and farming hand tools (stores are already rented, but still empty);
- Training leaflets were very limited or came too late;
- Most females HHs sent family male members for training and receiving of items and not coming by themselves;

5.8. PICTURES DOCUMENTATION

Storage, preparation and distribution of feed blocks



Figure 9: Storage, preparation and distribution of feed blocks

Check and verify of BF's documents



Figure 10: Check and verify of BF's documents



Figure 11: Education and awareness campaign on proper use of feed blocks



Figure 12: Follow up the growing of wheat



Figure 13: Awareness campaign for BF's before distribution of the feed concentrate and feed blocks



Figure 14: Distribution of feed concentrate and feed blocks

5.9. LESSONS LEARNED, CONCLUSIONS AND RECOMMENDATIONS

1. The introductory work shop at the beginning was very essential to keep the different actors from the beginning on award about the project objectives. Hence, the role and responsibilities of every actor and stakeholders is known (Directors of agricultural offices at governorate levels and districts levels, Director of the National Authority for Management and Coordination of Humanitarian Affairs (NAMCHA), Amran deputy governor for NGOs affaires, representatives of beneficiaries).
2. Although, the female representatives registered as Head of Households (HHs) were only 10 % (table 1) due to cultural reasons in Amran Governorate, but the end users as female making use of the agricultural items are more than 51% (table 2).
3. The FAO has conducted TOT training for trainers in crop and livestock production these trainers have then trained the heads of community committees in both districts. Moreover, the trainers have played key roles by awareness building and instructions of BFs during the distribution of the agricultural inputs
4. The feed blocks and feed concentrate have been received after ending the contract foreseen period and items have been distributed also after that.
5. The gardening materials have been not yet received up to date of this report.
6. Some problems were emerged with MAI head office in Amran; that was at the beginning of the activities in September 2018 but solved by bilateral meeting with general director of agricultural office in Amran and interfere of the FAO project coordinator.
7. Transportation problems due to the tragedy increasing in fuel prices have been faced;
8. Social problems (problems by Female registration);
9. Delay of delivering the animal feed concentrate, animal feed blocks and farming hand tools (stores rented, but remain for several months empty);
10. Training leaflets were very limited or came too late;
11. Most females HHs sent family male members for training and receiving of items and not coming by themselves;

6. SECOND COMPONENT OF THE CONTRACT " THE FISHERY COMPONENT"

Provision of

Services for the Distribution of Emergency Fishery Inputs to the Most Vulnerable Households in Al-Hodeida Governorate

Project: Emergency support for agriculture-based livelihoods through preservation of livestock assets- OSRO/YEM/804/CHA

Report by

Ghadaq Organisation for Development

Submitted to:

Food and Agriculture organization of the UN (FAO)

| | |
|--|-----------------------------------|
| Letter of Agreement number (reference) | OSRO/YEM/802/CHA |
| Date of entry into force of LoA | 9-5-2020 |
| End date of LoA | 19-5-2020 |
| Reporting period | February 2019 – May 2020 |
| Submitted by (name of responsible officer) | Dr. Abdul Gabbar Al-Kirshi |

6.1. OBJECTIVE AND OUTPUTS

6.1.1. OBJECTIVE

This intervention was designed to reduce food insecurity of the most vulnerable households and at-risk groups by providing emergency livelihoods assistance aimed at supporting fishing community by supplying fishery inputs in Hodeidah governorate.

With this part, the project intended to target 6,000 HHs in Hodeidah governorate by supporting them with fishery inputs.

Furthermore, FAO interventions intended to help vulnerable fishermen in target areas to protect their livelihoods from future shocks, to improve their food security and nutrition.

6.1.2. OUTPUTS

Diversified income and livelihoods of vulnerable households through provision of fishing equipment to 6000 households in Al Hodaidah governorate

The outputs of the project that implemented by Ghadaq:

2. Distribution of fishery inputs (2000 fishing nets, 2000 iceboxes) provided to pre-selected beneficiaries in the districts of Alluheyah, Bajil and Bayt Al Faqiah of Al-Hodeidah governorate to allow them to return to fishing.
3. Conduct one end-line and post distribution surveys covering all targeted districts (a percentage yet to be identified by the M&E unit).
4. Implement M&E activities including field visits and inter-agency coordination.

6.1.3. BENEFICIARIES' IDENTIFICATION, MOBILIZATION & SENSITIZATION

In coordination with the Ministry of Fish Wealth/Directorate General of Fisheries- Red Sea and Regional Fisheries Authorities in the targeted governorates Ghadaq conducted mobilization and sensitization activities to the communities.

Ghadaq in each district has conducted the following activities under direct supervision of the Directorate General of Fisheries- Red Sea Offices in the governorate:

Activities:

1. Several measures were taken before distributing the inputs, in light of COVID-19 pandemic, see the following precautionary:
 - a) Each group nominates one of them to receive the inputs in order to alleviate the crowds of beneficiaries.
 - b) Measuring the temperature of the beneficiaries before entering the distribution points by thermostat.
 - c) Daily sterilization of inputs before distributed to the beneficiaries.
 - d) Preparing and organizing the place of distribution by marking and specifying a distance not less than one meter between each beneficiary and another.
 - e) Masks, sterilizers, and gloves were distributed to the distribution team.
2. Mobilize and sensitize target communities, undertake beneficiary selection, validation and registration.

3. Prepare distribution plan in each location complete with names of the beneficiaries.
4. Necessary arrangements to contact all beneficiaries.
5. Coordinate with the suppliers to identify the places in each district as store sites and distribution points for fishery inputs.
6. In coordination with supplier, local authorities at district, Directorate General of Fisheries- Red Sea Offices in governorate carry out distribution of all inputs to the targeted beneficiaries .
7. Prepared the distribution names lists containing the same agreed lists of beneficiaries including the following data:
 - The name of beneficiary and the village name;
 - Sub-district (Ozlah) name and district name;
 - Quantity of fishing gears received;
 - Stamp (Fingerprint) and;
 - Bottom of each list included the signature and stamp of director of local authority, Directorate General of Fisheries- Red Sea offices in the districts and governorate.

6.1.4. TARGETED BENEFICIARIES:

Beneficiaries were carefully selected in collaboration with local authorities and the community in the targeted areas. beneficiaries consist of poor rural households living in the selected communities with focusing on stressed host communities, women headed households and youth, men and women with disabilities were also targeted. Targeted beneficiaries were **6000** HH from Bait Alfaqeeh , Bajel , Khoubah and Alluhayah districts Alhudaiedah govrenorates. The Tables below will explain more about the targeted Beneficiaries:

Table 6: districts, distribution points, distribution items to BFs and groups

| No | Governorate | Districts | Distribution points | # of days of distribution | # ice box | # fishing nets | # BFs | # groups | Start date |
|-------|-------------|-----------------------|-----------------------|---------------------------|-----------|----------------|-------|----------|------------|
| 1 | Alhudaiedah | Alluhayah and Khoubah | Alluhayah and Khoubah | 6 | 600 | 600 | 1800 | 600 | 9/5/2020 |
| | | | | 8 | 800 | 800 | 2400 | 800 | 9/5/2020 |
| | | Bajel | Bajel | 4 | 400 | 400 | 1200 | 400 | 9/5/2020 |
| | | Bait Alfaqeeh | Bait Alfaqeeh | 2 | 200 | 200 | 600 | 200 | 9/5/2020 |
| Total | | | | 20 | 2000 | 2000 | 6000 | 2000 | |

Table 7: the distribution points in the districts

| No | Governorate | Districts | Distribution points |
|----|-------------|-----------------------------|----------------------------|
| 1 | Alhudaiedah | Alluhayah including Khoubah | Alaml School |
| | | | Yard of the store |
| | | Bajel | Allahm village |
| | | Bait Alfaqeeh | Yard next to Bait Alshabab |

6.1.5. CHALLENGES OF THE SECOND COMPONENT "FISHERY COMPONENT"

- Fishery component has been added to the contract of the first component "agriculture component" in the amended contract **signed on 11. February 2019** and supposed to be completed **within three months**.
- On 10.03.2019 the NAMCHA has issued a working **license for three months** started 11.03.2019 until 11.06.2019. In this time Ghadaq has performed the following:
 - **Forming the community** committees in close cooperation with General Authorities for fishery;
 - **Registration of 6000 BF's of fishermen** in close cooperation with the General Authorities for fishery;
 - **Rent four big stores in** Alluhaya, Alkhaubah, Bajel and Bait Alfaqeeh;
 - **Prepare distribution plan and waiting for delivery the fishery items.**
- There was delay in item delivering and we were always told that they are in the way and we have to be patient and to wait. Therefore:
 - We kept the field team for extra 2 months more as planed (May and June 2019 and then released due to still not arrival of items);
 - We kept the stores also rented for extra 2 months more as planed (May and June 2019 and then also canceled);
 - The field coordinator is kept standby till now;
- Fishery items arrived Hudaidh in December 2019 (8 months delay as supposed in the plan and in the contract);
- **Again Ghadaq has rented 4 new stores and 4 guards and stored the items;**
- Ghadaq could not launch the distribution immediately after receiving the items since the SCCEMCHA in Hudaidah asked for renewing the distribution license in head office in Sana'a.
- In Sana'a we appointed extra person for daily contact and follow up the SCCEMCH to get the new distribution license (5 Months),
- By the end of April we have obtained the license from SCCEMCHA Head office to distribute fishery inputs for BFS in Hodeidah for very short period (14) days from 25/4/2020 to 9/5/2020 Ghadaq team moved to the field in order to prepare and start the distribution, but unfortunately, we were stopped from the distribution in the District because of the costs of renting the stores and cost guards not paid for them for six months.

6.1.6. DOCUMENTATION OF THE FISHERY COMPONENT



Figure 15: The minister of fishery along with other officials on 31.Juanury 2010 inaugurated the activities for fishery distribution



Figure 16: Received the fishery inputs, sterilized and stored



Figure 17: Verification of beneficiaries of fishery inputs



Figure 18: Precautionary measures fisher inputs and distributions



Figure 19: Fishery inputs and distributions



Figure 20: Distribution team of fishery inputs